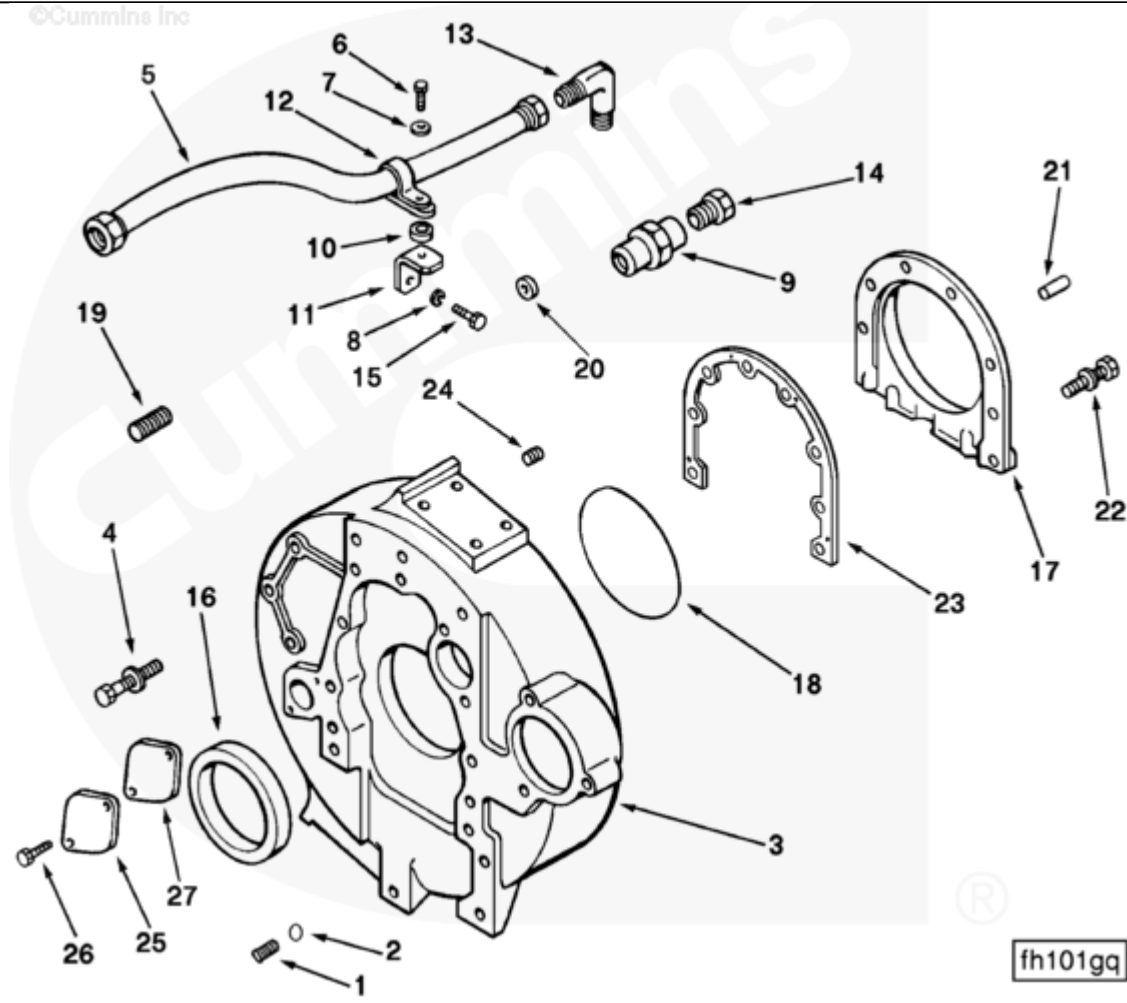




Parts Catalog - Option Detail

Electronic Parts Catalog - Option Detail				
Option	Group	Graphic	Film Card	Date
FH1168	16.01	fh101gq	F	04-JUN-90
Engines	NH/NT 855, NT495, NT743, NTA855 N106			



SMALL | MEDIUM | LARGE

Cart	Ref No	Part Number	Part Description	Required	Remarks
View My Cart					
		FH1168	Flywheel Housing		SAE #1 wet flywheel housing...(More)
					with six mounting holes on
					each pad for 0degree tilt.
					Starter mounting at 90degrees

					between #3 and #4 quadrants.
					9.60inches starter distance.
					The vent hose is long enough
					to accommodate factory
					installed and customer uplift
					engine brake application.
<input type="checkbox"/>		3046202	Threaded Plug	1	3/4 - 16 UNF.
	1	3040810	Threaded Plug	1	
<input type="checkbox"/>	2	3046201	O-Ring Seal	1	
<input type="checkbox"/>	3	3025177	Flywheel Housing	1	
<input type="checkbox"/>	4	3048353	Captive Washer Cap Screw	9	5/8 - 18 X 1 3/4 Inch.
<input type="checkbox"/>	5	AK 4027 MS	Flexible Hose	1	
<input type="checkbox"/>	6	S 181 B	Hexagon Head Cap Screw	1	3/8 - 16 X 1/2 in.
<input type="checkbox"/>	7	S 602	Plain Washer	1	3/8 in.
<input type="checkbox"/>	8	S 604	Lock Washer	1	3/8 in.
<input type="checkbox"/>	9	S 1059	Plain Pipe Coupling	1	
<input type="checkbox"/>	10	63385	Mounting Spacer	1	
<input type="checkbox"/>	11	68190	Tube Brace	1	
<input type="checkbox"/>	12	68425	Clip	1	
<input type="checkbox"/>	13	112105	Male Adapter Elbow	1	
<input type="checkbox"/>	14	213714	Filter , Aneroid Air	1	
<input type="checkbox"/>	15	3011716	Captive Washer Cap Screw	1	3/8 - 16 x 1 3/8 in.
	16	3001772	Oil Seal	1	
<input type="checkbox"/>	17	216165	Rear Cover	1	
<input type="checkbox"/>	18	137075	O-Ring Seal	1	
<input type="checkbox"/>	19	3008469	Pipe Plug	1	3/4 NPT
<input type="checkbox"/>	20	172648	Rectangular Ring Seal	11	
<input type="checkbox"/>	21	60408	Pin Dowel	2	
<input type="checkbox"/>	22	3010594	Captive Washer Cap Screw	8	3/8 - 24 X 1 1/2 Inch.
<input type="checkbox"/>	23	3067616	Rear Cover Gasket	1	

<input type="checkbox"/>	24	S 910 B	Pipe Plug	1	1/4 NPT.
<input type="checkbox"/>	25	70657	Access Hole Cover	1	
<input type="checkbox"/>	26	3001646	Self Tapping Metal Screw	2	1/4 - 20 X 5/8 Inch.
<input type="checkbox"/>	27	3021735	Flywheel Housing Gasket	1	

© 2019 Cummins Inc., Box 3005, Columbus, IN 47202-3005 U.S.A.
Terms of Use and Disclaimers | Recommended System Requirements
Need Assistance? Please click on the Contact Us button in the top right corner of any page.